

deepblu

COSMIQ⁺

DIVE COMPUTER



USER MANUAL

Firmware version 1.9

© Deepblu, Inc. All rights reserved.

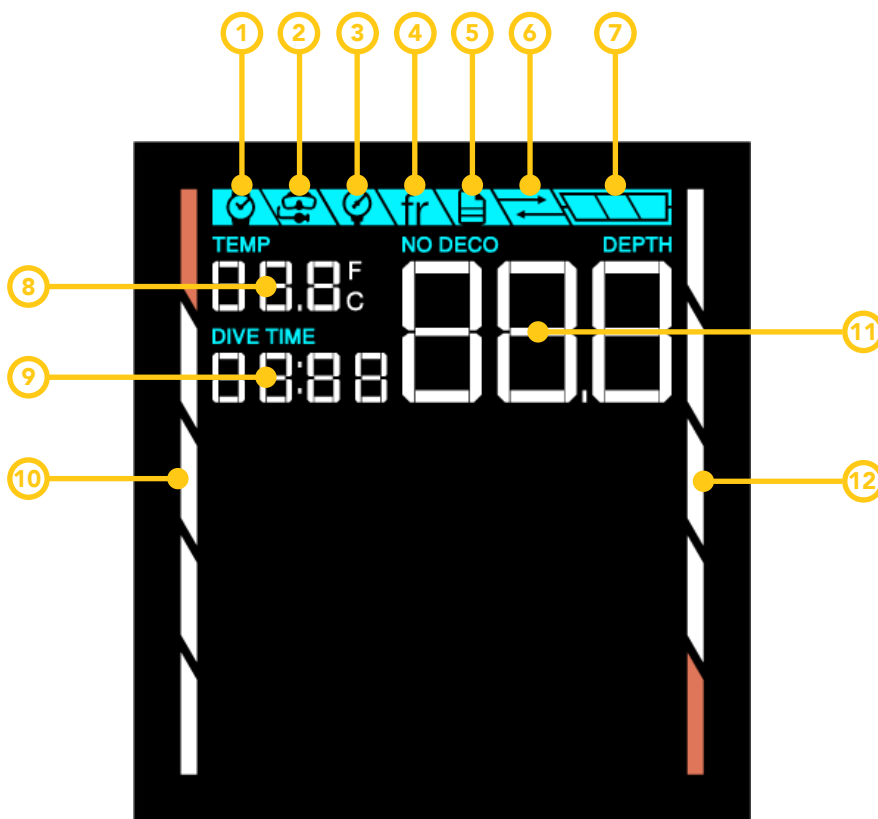
Contents

1.	Overview	1
1.1	COSMIQ+ Gen 5	1
1.2	COSMIQ versus COSMIQ+	1
1.3	Key features	1
2.	Safety information	3
2.1	Safely diving with your COSMIQ+	3
2.2	Alarms	4
2.3	Dive alarms table	4
3.	Operating your COSMIQ+	7
3.1	Buttons and navigation	7
3.2	Operating modes	7
4.	Setting up your COSMIQ+ with your mobile device	9
4.1	Pairing your COSMIQ+ with your mobile device	9
4.2	Adjusting the settings	9
4.3	Updating the firmware	10
4.4	Synchronizing dive data	10
5.	Diving with your COSMIQ+	12
5.1	Planning a dive	12
5.2	Diving in Scuba Mode	12
5.2.1	Checking and adjusting the settings	12
5.2.2	Entering the water	14
5.2.3	Information during your dive	14
5.2.4	After your dive	15
5.2.5	Warnings during the dive	16
5.3	Diving in Bottom Timer Mode	18

5.3.1	Entering the water	18
5.3.2	During your dive	19
5.3.3	After your dive	20
5.4	Diving in Freedive Mode	20
5.4.1	Setting time and depth alarms	20
5.4.2	Entering the water	21
5.4.3	During your dive	21
5.4.4	After your dive	22
6.	Checking your dive logs	23
7.	COSMIQ+ maintenance	24
7.1	Battery and charging	24
7.2	Taking care of your COSMIQ+	24
7.3	Safe disposal	24
8.	Technical specifications	26
9.	Limited warranty	28
10.	Glossary	29

Display Reference Guide

Part I



① Watch Mode

② Scuba Mode

③ Gauge Mode

④ Freedive Mode

⑤ Log Mode

⑥ Sync Mode

⑦ Battery Power Indicator

⑧ Water Temperature

⑨ Dive Time

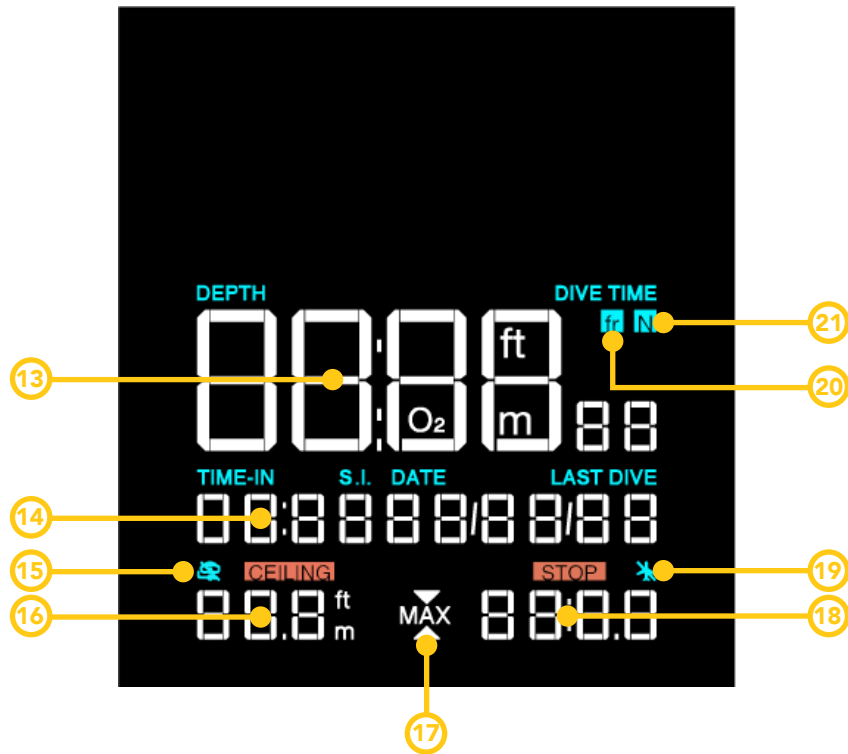
⑩ Ascent Rate Bar

⑪ No Decompression Limit (Scuba/Gauge Mode)
Current Depth (Freedive Mode)

⑫ NDL Graphic Bar

Display Reference Guide

Part II



- 13 Time (Watch Mode)
Current Depth (Scuba Mode)
Nitrox % (Scuba Mode)
Dive Time (Freedive Mode)
Sync Time (Sync Mode)

- 14 Surface Interval (Watch Mode)
Last Dive Date (Watch Mode)
Current Date (Watch Mode)
Surface Interval (Watch Mode)
Current Time (Scuba Mode)
Current Time (Gauge Mode)
Time-In (Log Mode)

- 15 No Dive icon

- 16 No Dive Time (Watch Mode)
Max Depth or Ceiling Depth (Scuba Mode)
Max Depth (Freedive Mode)
Depth (Dive Plan)

- 17 Ascend / Descend icon

- 18 No Fly Time (Watch Mode)
Stop Countdown Time (Scuba Mode)
Max Time (Freedive Mode)
Log Number (Log Mode)
No Decompression Limit in mins (Dive Plan)

- 19 No Fly icon

- 20 Freedive Mode icon

- 21 Nitrox icon

1. Overview

Congratulations on the purchase of your new COSMIQ+ Dive Computer!

Your COSMIQ+ Dive Computer is designed to bring an entirely hassle-free diving experience to scuba divers and freedivers. The COSMIQ+ is easy to read and operate and synchronizes wirelessly with the Deepblu app, allowing you to effortlessly create digital dive logs that you can keep as a memory or share with your peers.

1.1 COSMIQ+ Gen 5

The latest COSMIQ+ Gen 5 model has been upgraded with additional memory to accommodate up to 200 dive logs compared to just 25 logs in the previous generations of COSMIQ+ and COMSIQ. With the increased on board memory capacity, the Free Diving Mode depth alarm on the COSMIQ+ Gen 5 also has also been increased to 6 customizable depth alarms compared to only 3 depth alarms in the previous models.

1.2 COSMIQ versus COSMIQ+

Launched in November 2016, the COSMIQ+ is a refresh of the original COSMIQ. The COSMIQ+ and COSMIQ are nearly identical, but the COSMIQ+ replaces the Gauge Mode with a Bottom Timer Mode, which adds a resettable average depth and a secondary time reading. Unless otherwise specified, all instructions in this manual apply to both models.

1.3 Key features

Measures all vital dive data and performs decompression, saturation and desaturation calculations.

- Large, high-contrast screen displaying all vital dive information at once.
- Scuba Mode with proprietary and adjustable decompression algorithm based on Bühlmann ZHL-16C to help you safely dive within your limits.
- Bottom Timer Mode with resettable average depth and stage time (COSMIQ+ only).
- Gauge Mode with current depth and run time (Original COSMIQ only).
- Freedive Mode designed specifically for freediving (apnea).
- Log Mode to quickly check on up to 200 previous dives (25 dives for Pre-COSMIQ+ Gen 5 Models).
- Dive Plan function to dynamically plan your dive.
- Audible and visual alarms to warn you of dangerous situations.
- Wireless synchronization with a mobile device to create and share digital dive logs.

- Easily adjustable settings via the user-friendly Deepblu app.
- Supports nitrox diving between 21% and 40%.
- Supports high-altitude diving and diving in highly saline water.
- Free over-the-air (OTA) firmware upgrades.
- Rechargeable Li-ion battery with magnetic USB connector.
- Power-saving mode and brightness settings to extend battery life.

2. Safety information

NOTE: Always turn off your COSMIQ+ before flying, as changes in pressure may cause it to start logging and exceed the no-decompression limit, locking you out of Scuba Mode.

Carefully read the entire contents of this user manual and be sure that you fully understand the purpose, technical functions, settings, risks, and limitations of your device before diving. Failure to do so might lead to serious injury, harm, sickness or even death.

If you have any questions about your COSMIQ+ Dive Computer, please ask your COSMIQ Reseller, speak to a qualified dive instructor, or contact Deepblu at support@deepblu.com.

2.1 Safely diving with your COSMIQ+

DO NOT use your COSMIQ+ as your primary dive computer for professional diving and/ or technical diving (also referred to as tec diving or tech diving) which is defined as scuba diving that exceeds the agency-specified limits of recreational diving.

DO NOT use the COSMIQ+ for scuba diving if you are not trained or certified in the appropriate use of scuba equipment and techniques by an internationally accredited dive agency. Using a dive computer is not a substitute for adequate training.

DO NOT use the COSMIQ+ for freediving if you are not trained or certified in the appropriate freediving techniques.

DO NOT use the COSMIQ+ for diving with nitrox if you have not been trained by a recognized certification agency in the appropriate use of nitrox.

DO NOT ignore alarms and warnings on your COSMIQ+, whether at the surface or during a dive. Failure to respond appropriately to alarms and warnings may result in harm, injury, sickness and even death.

DO NOT board a plane when the No-Fly icon is showing. Flying while COSMIQ+ displays the No-Fly symbol may result in serious injury or death.

Using the COSMIQ+ DOES NOT remove the risk of decompression illness. Decompression illness may still occur even with a dive profile based on dive tables or which is deemed safe by a dive computer. The COSMIQ+ does not consider the unique biological characteristics of each individual diver, including their physiological disposition, alcohol consumption, dehydration, or use of medication or other drugs,

all of which may cause a diver to be more susceptible to decompression illness. Deepblu strongly advises that you consult a doctor before diving to determine your fitness for diving.

Using the COSMIQ+ does not replace the need for other instruments. The COSMIQ+ is intended to supplement the use of other instruments, including a depth gauge, pressure gauge, timer and watch.

DO NOT exchange your COSMIQ+ with others during dives or between two dives in a series. The information displayed applies only to the diver who has been using it throughout a dive or series of dives, and the recorded information will therefore not be accurate for anyone else.

Ensure that your COSMIQ+ works properly before diving. Check the display and cycle between modes to verify that it is functioning properly. Additionally, make sure that there is sufficient battery power to complete your dive. DO NOT dive if the computer's display is not clearly visible, if it is frozen in one mode, or if the battery power is low.

2.2 Alarms

The COSMIQ+ Dive Computer uses a range of visual and audible alarms to warn you of potentially dangerous situations while diving. It also lets you set custom depth and time alarms. It is very important to understand the purpose and function of the alarms so you can take appropriate action and avoid danger.

2.3 Dive alarms table

Situation	Alarm	What to do
Safe Ascent Rate Exceeded	<ul style="list-style-type: none"> • Continuous beeping • Ascent rate bar full 	Slow your ascent until alarm stops.
CNS = 80%	<ul style="list-style-type: none"> • 5 beeps per minute • CNS flashing • Arrow indicator flashing 	End the dive. Conduct a safety stop and ascend to the surface.
CNS >= 85%	<ul style="list-style-type: none"> • 10 beeps per 3 seconds • CNS flashing • Arrow indicator flashing 	End the dive. Conduct a safety stop and ascend to the surface.

Maximum Operation Depth (MOD) Exceeded	<ul style="list-style-type: none"> • Continuous beeping • PO2 flashing • Up arrow indicator flashing 	Ascend above the MOD. Consider ending the dive.
No-Decompression Limit (NDL) Approaching	<ul style="list-style-type: none"> • 3 minutes left: 3 beeps • 2 minutes left: 3 beeps • 1 minute left: 5 beeps 	Ascend to a shallower depth.
No-Decompression Limit (NDL) Exceeded	<ul style="list-style-type: none"> • 10 beeps during 20 seconds, 10-second pause, repeated for 3 minutes • Up arrow indicator flashing • CEL and Ceiling Depth value flashing • Stop indicator and Stop Countdown Time flashing 	Ascend to the Ceiling Depth indicated in the bottom left corner of COSMIQ+ and perform a mandatory decompression stop. Do not ascend above the Ceiling Depth until the Stop Countdown Time shows 00:00.
Battery Power Low	1 beep every minute	Charge your COSMIQ+ as soon as possible. Consider ending your dive.
COSMIQ+ Shutting Down	1 beep	End your dive safely. Charge your COSMIQ+ immediately.
Depth Limit Reached (Freedive Mode)	3 short beeps	
Time Limit Reached (Freedive Mode)	6 cycles of 3 beeps	

Surface Interval Completed (Freedive Mode)	<ul style="list-style-type: none"> • 2 cycles of 2 beeps (surface interval half completed) • 2 cycles of 3 beeps (surface interval completed) 	
Depth Limit Reached (Scuba Mode)	6 cycles of 2 beeps	
Time Limit Reached (Scuba Mode)	6 cycles of 3 beeps	

3. Operating your COSMIQ+

3.1 Buttons and navigation

To turn on your COSMIQ+, hold the left and right buttons simultaneously for 3–5 seconds. Your COSMIQ+ will start in **Watch Mode**.

Press the left button (**MODE**) button to cycle through the various operating modes. Press the right button (**ADJUST**) button to adjust mode-specific settings.

In **Watch Mode**, your COSMIQ+ will automatically enter **Standby** after 20 seconds of inactivity to conserve battery power. While the screen goes blank, the computer is still active. Press any button to activate your COSMIQ+ and turn on the display. You can adjust the standby timeout in the Deepblu app.





To fully turn off your COSMIQ+, make sure it is in **Watch Mode** or **Standby**, and hold both buttons simultaneously for 3–5 seconds.



NOTE: Always turn off your COSMIQ+ before flying, as changes in pressure may cause it to start logging and exceed the no-decompression limit, locking you out of Scuba Mode.

3.2 Operating modes

Your COSMIQ+ Dive Computer has 6 operating modes. You can tell which mode is currently active by looking at the icon indicator at the top of the screen.



- **Watch Mode**  : Shows the current time and date and allows you to make a dive plan. If the time and date are incorrect, synchronize your COSMIQ+ with the Deepblu app.
- **Scuba Mode**  : Measures and displays all vital dive information while scuba diving. It will also visually and audibly let you know if you are entering potentially dangerous situations.
- **Bottom Timer Mode**  : Your COSMIQ+ acts as a depth gauge and timer and **DOES NOT** perform any decompression calculations. On the original COSMIQ model, this mode was called Gauge Mode.
- **Freedive Mode**  : Measures and displays all vital dive information while freediving. Allows you to set time and depth alarms.

- **Log Mode ** : Gives access to dive data from previous dives.
- **Sync Mode ** : Allows you to sync your COSMIQ+ with the Deepblu app to transfer dive data and change the settings. Shows an overview of your device's settings and current firmware version.

4. Setting up your COSMIQ+ with your mobile device

Your COSMIQ+ comes with Blue-tooth technology allowing it to wirelessly transfer dive data, settings and software updates via a specially developed application for your mobile phone or tablet.

You MUST synchronize with the Deepblu app to adjust the time and date, change the settings, synchronize dive data, and register the product for warranty purposes.

4.1 Pairing your COSMIQ+ with your mobile device

Download and install the application from the [Apple App Store](#) or the [Google Play Store](#). Open the app, register for a Deepblu account and log in.



Next, ensure that Blue-tooth is enabled on your smartphone and place your COSMIQ+ close to your smartphone. On your COSMIQ+, navigate to **Sync Mode** using the **MODE** button. A countdown of 1 minute and 30 seconds will begin on the screen.

Now open the Deepblu app, access the menu, and press **Your Dive Computers**. From here, select **Deepblu COSMIQ**. The app will automatically start to scan for your COSMIQ+. Once it detects your COSMIQ+, it will begin the pairing process. If there are multiple devices nearby, the app will let you choose (closer devices will appear higher in the list). A running rectangle on your COSMIQ+ shows that the devices are transmitting data.

When the pairing process is complete, the **COSMIQ+** screen will appear with 4 options.

- **Rename COSMIQ+:** Tap the pen icon to give your COSMIQ+ a personal name.
- **Sync Logs:** Create digital dive logs using dive data from your COSMIQ+.
- **Firmware Update:** The app will indicate when an update for your COSMIQ+ is available.
- **COSMIQ+ Settings:** Adjust the settings on your COSMIQ+.

NOTE: You only need to pair COSMIQ+ with your mobile device once. After it has been successfully paired the first time, the Deepblu app will automatically establish a Blue-tooth connection with your COSMIQ+ when you put it in sync mode.

4.2 Adjusting the settings

The time and date on your COSMIQ+ are automatically synchronized with your mobile device when you pair the device. All other settings can be controlled from the Deepblu app. To change settings, choose **COSMIQ Settings** from the **COSMIQ+** screen after establishing the connection.

You will see three groups of settings. **General** covers settings that control the behavior of your COSMIQ+ in general or across all dive modes. **Scuba Mode** and **Freedive Mode** control the settings for these respective dive modes.

As you change each setting, they are immediately applied to your COSMIQ+. There is no need to 'save' the settings.

4.3 Updating the firmware

Deepblu regularly releases improvements and fixes for your COSMIQ+ in the form of firmware updates. It is important that you update the firmware whenever an update is available. The firmware version currently installed on your COSMIQ+ is indicated in the bottom-left corner of the display when your COSMIQ+ is in **Sync Mode**.

To update the COSMIQ+ firmware, make sure you have paired your COSMIQ+ with your mobile device as per the instructions above. Then put your COSMIQ+ in sync mode and select your COSMIQ+ from the **Your Dive Computers** section in the Deepblu app menu.

Press the **Firmware Update** button to check for new updates. If new firmware is available for your COSMIQ+, the application will offer to install it right away. Tap **Yes** to install now, or choose **No** to postpone the update until a more convenient time.

The update process takes 7–12 minutes depending on your handset. Both your COSMIQ+ and your phone need to remain on and near each other. Deepblu recommends keeping both devices charged while updating.

4.4 Synchronizing dive data

Synchronize your dive data from your COSMIQ+ with the Deepblu app to create digital dive logs that will be safely stored into the Deepblu cloud. These interactive dive logs can hold your underwater photography and memories and can be shared with your buddies.

Step 1: Prepare your COSMIQ+

Navigate to **Sync Mode** on your COSMIQ+ using the **MODE** button. A countdown time of one and a half minutes will begin automatically.

Step 2: Prepare the Deepblu app

Enable the Blue-tooth setting on your mobile device. Make sure the two devices are close to each other. Access the Deepblu app on your mobile device. In the main menu of the Deepblu app, press **Your Dive Computers**. Wait for the connection to be established. If multiple dive computers are set up with Deepblu, select your device from the options.

Step 3: Sync dive data

Next, in the COSMIQ+ menu, press **Sync Logs**. Dive data will be uploaded automatically; this may take a few minutes. Do not turn off either device or move them too far apart. Deepblu also recommends not to switch to other applications while transferring dive data.

After the syncing process is complete, your logs will be accessible in the **Dive Logs** section of the Deepblu app. You can edit them and add photography at any time to create digital dive logs.

NOTE: Your COSMIQ+ will only upload each log once. After a log has been transferred to the Deepblu app once, it will not be duplicated.

5. Diving with your COSMIQ+

5.1 Planning a dive

The Dive Plan function helps you plan your next dive within safe limits, based on previous dives executed with your COSMIQ+. To access it, navigate to **Watch Mode** and press the **ADJUST** button. The letters **PLAN** appear as well as values for depth and your corresponding no-decompression limit (NDL).

Press **ADJUST** repeatedly to cycle the depth between 9 m (30 ft) and 40 m (135 ft). Your corresponding NDL (in minutes) will be displayed on the bottom-right. Three dashes (- - -) mean that the NDL exceeds 300 minutes. The Dive Plan function will not display depths beyond your NDL or beyond the maximum operating depth (MOD).

When you are finished using the Dive Plan function, press the **MODE** button at any time to switch back to **Watch Mode**.

5.2 Diving in Scuba Mode

In **Scuba Mode**, your COSMIQ+ will perform decompression calculations and assist you through any mandatory decompression stops should you accidentally exceed your no-decompression limit.

5.2.1 Checking and adjusting the settings

Before immersion, your COSMIQ+ will display a summary of the settings that govern the decompression calculations. It is important that you check these carefully before entering the water as no settings can be changed during a dive. Except for the oxygen level in your air mix, all settings must be set using the Deepblu app.



Oxygen level

Press the **ADJUST** button repeatedly to change the oxygen level in your air mix from 21% (standard air) to 40% (nitrox). COSMIQ+ will display the corresponding maximum operating depth at the bottom of the screen.

When done, press **MODE** to return to **Scuba Mode**. If you have changed your oxygen level to anything other than 21%, the Nitrox icon **N** will now light up.

Note that this setting will remain between dives until changed.

Safety factor

The Safety Factor controls the decompression algorithm your COSMIQ+ uses to perform decompression calculations. It allows you to choose a level of conservativeness based on your personal preference and unique risk factors.

The Safety Factor can only be changed through the Deepblu app, but you can check the current setting on your COSMIQ+ in **Scuba Mode**. Look for the letters **SF:** followed by a two-letter code for the safety factor: **Co** for Conservative, **Nr** for Normal, and **Pr** for Progressive. The Safety Factor can only be changed through the Deepblu app.

Partial pressure of oxygen (PPO₂)

Your COSMIQ+ defaults to a PPO₂ level of 1.4 bar for safety reasons, but this setting can be adjusted between 1.2 bar and 1.6 bar in intervals of 0.1 bar.

The PPO₂ setting can only be changed through the Deepblu mobile app, but you can

check the current setting on your COSMIQ+ at the top of the **Scuba Mode** screen after the letter **P**.

5.2.2 Entering the water

There are two ways to start a dive in **Scuba Mode**: water activation and manual activation.

Water activation: If **Scuba Mode** is your default dive mode, simply enter the water when your COSMIQ+ is in **Standby** or **Watch Mode**. Your COSMIQ+ will automatically activate Scuba Mode once you descend past 1.5 m (5 ft).. You can tell if the current mode is the default mode when the letters **dF** show. This setting can be adjusted in the Deepblu app.

NOTE: Because your COSMIQ+ captures data at 15-second intervals in Watch Mode, there may be a slight delay between descending below 2 m (6 ft) and **Scuba Mode** activating. During a dive, however, the sample rate of your COSMIQ+ is 1 second.

Manual activation: Manually navigate to **Scuba Mode** using the **MODE** button. Your COSMIQ+ will show you an overview of all your dive settings (see section 3 above). Enter the water and begin your descent while in **Scuba Mode**.

NOTE: Make sure you reach depth within 3 minutes, before your COSMIQ+ jumps back into **Watch Mode**. When detecting pressure in **Watch Mode**, your COSMIQ+ will activate the default dive mode, which may or may not be **Scuba Mode**.

5.2.3 Information during your dive

Once your COSMIQ+ starts logging your dive, it will disable the buttons for the duration of your dive and display all necessary dive information at once on its bright always-on display.



5.2.4 After your dive

Upon surfacing from a dive, or when you are shallower than 2 m (6 ft), your COSMIQ+ will remain in **Scuba Mode** for 5 minutes. If you surface for fewer than 5 minutes and then descend again, your COSMIQ+ will consider this a continuation of the previous dive and the calculations will continue from where they left off.

After 5 minutes, your COSMIQ+ will begin to count the Surface Interval Time. It will be displayed on the **Watch Mode** screen and counted upwards in hours and minutes. Any additional descent will be considered a new dive.

The dive data recorded during each dive is accessible through **Log Mode**.

No-Dive Time, No-Fly Time and Dynamic Lock

After every dive, the No-Fly icon ✈️ will be shown in the bottom-right corner of the display. The No-Fly Time is based on the calculations of your desaturation time according to your actual dive profile. The No-Fly Time will be counted downwards every half hour.

Depending on the estimated level of residual nitrogen in your body, your COSMIQ+ may display a No-Dive Time underneath the No-Dive icon 🚫, counted down in half-hour intervals.

With a conservative or normal safety factor setting, a No-Dive Time of over 1 hour will lead to a temporary lock (the letters **SUF** appear on screen). This is to encourage you to conduct a minimum surface interval to offload excess nitrogen. When your

COSMIQ+ is locked, **Scuba Mode** will be inactive and any dive attempted during a lock will be conducted in **Bottom Timer Mode**. When the No-Dive Time has elapsed, **Scuba Mode** will become available again.

5.2.5 Warnings during the dive

Your COSMIQ+ will also alert you about potentially dangerous situations with sound and on-screen warnings.



Safety stop due

For every dive exceeding 10 minutes and deeper than 9 m (30 ft) your COSMIQ+ automatically recommends a 3-minute safety stop.

When a safety stop is due, the **STOP** indicator lights up and the Countdown Time will be shown in two locations on the screen: in minutes and seconds underneath the stop indicator, and in seconds only in the space previously occupied by the NDL time.

The countdown will start and continue while you are within a range of 6–3 m (20–10 ft). If you ascend or descend out of this range, the countdown will pause until you are within range again.

No-Decompression Limit (NDL) exceeded

Except during a safety stop, the no-decompression time limit (NDL) is shown in minutes in the top right hand corner of the screen underneath the **No Deco** indicator. The no-decompression limit is also represented by a graphic bar on the

right side of the screen.

NDL Bar	No-Decompression Time Limit
0 bars	NDL exceeded
1 bar	0–5 min
2 bars	5–15 min
3 bars	15–30 min
4 bars	30–60 min
5 bars	> 60 min

Your COSMIQ+ will beep when you are 3 minutes away from reaching your no-decompression limit. It will then sound every minute until the no-decompression limit is exceeded.

If you exceed your no-decompression limit, your COSMIQ+ will provide the following information to help you safely perform your mandatory decompression stop.

- **The letters CEL flash on the screen along with an arrow instructing you to ascend to the ceiling level.**
- **The ceiling and stop indicators flash along with the ceiling depth and the mandatory decompression stop time.**
- **The word dECO appears next to the number of minutes since exceeding your NDL.**
- **The alarm will beep 10 times for a duration of 20 seconds and will continue this cycle every 10 seconds for a total of 3 minutes.**

To perform your mandatory decompression stop, ascend to the ceiling depth and stay there until the mandatory stop countdown time has elapsed. Do not ascend above the ceiling depth until the Stop Countdown Time has elapsed. Once the stop countdown time is over, it is safe to ascend to the next ceiling depth (if required) or to the surface.

Note that the Ceiling Depth and Stop Countdown Time values may disappear from the screen if you ascend soon after exceeding your NDL and your COSMIQ+ calculates that your nitrogen levels have receded back to safe levels. You should still conduct a regular safety stop at the end of your dive.

Central Nervous System (CNS) oxygen toxicity danger

If your COSMIQ+ calculates a CNS oxygen toxicity level of 80%, the letters **CNS** will flash on the screen along with an arrow indicator instructing you to ascend to a shallower depth. The alarm will increase in frequency if you fail to do so and as the toxicity level reaches 85%. In case of a CNS alarm, conduct a safety stop and end the dive immediately.

Maximum Operating Depth (MOD) exceeded

If you have exceeded your MOD during a dive, your COSMIQ+ will sound an alarm and the letters **PO2** will flash on screen along with an arrow indicator instructing you to ascend to a shallower depth. The alarm will continue to sound until you ascend above the MOD. In case of an MOD alarm, ascend to a shallower depth and consider ending the dive.

Safe ascent rate exceeded

Your COSMIQ+ considers an ascent rate slower than 12 m (40 ft) per minute to be safe. If you exceed this rate, the alarm will sound until you slow your ascent. The ascent rate bar operates according to the table below.

Bar Indicator	Ascent Rate
No bars	Slower than 4 m (13 ft) per minute
1 bar	4–6 m (13–20 ft) per minute
2 bars	6–8 m (20–26 ft) per minute
3 bars	8–10 m (26–33 ft) per minute
4 bars	10–12 m (33–40 ft) per minute
5 bars	Faster than 12 m (40 ft) per minute

5.3 Diving in Bottom Timer Mode

No decompression calculations are done in **Bottom Timer Mode**; only depth, time and temperature are measured. Use this mode when you use your COSMIQ+ as a secondary dive computer or as a depth gauge and timer only.

5.3.1 Entering the water

Just like diving in **Scuba Mode**, there are two ways to start a dive in **Bottom Timer**

Mode: water activation and manual activation.

If your COSMIQ+ is set to use **Bottom Timer Mode** as the default dive mode, just enter the water when in Standby or **Watch Mode** and your COSMIQ+ will activate within seconds of detecting 2 m (6 ft) of water pressure. You can tell if the current mode is the default mode when the letters **df** show. This setting can be adjusted in the Deepblu app.

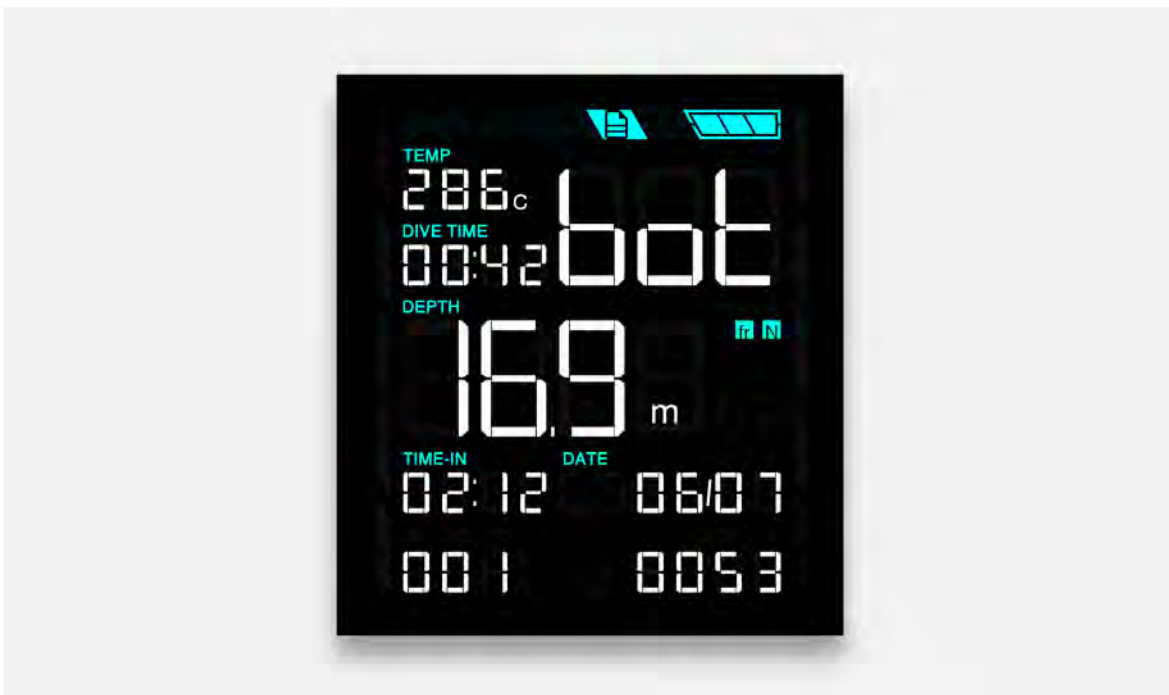
If it is not your default dive mode, simply navigate to Bottom Timer Mode and dive to 2 m (6 ft) of depth before the timeout of 3 minutes has elapsed.

5.3.2 During your dive

Once you descend past 2 m (6 ft), your COSMIQ+ will lock into **Bottom Timer Mode**. The **MODE** button will be disabled for the duration of the dive. No other modes can be accessed during the dive.

In addition to depth, temperature and dive time, your COSMIQ+ will also keep track of average depth and a secondary time. These values are useful to monitor staged dives, for example where you need to make decompression stops. You can reset the average depth and secondary time at any time by pressing the **ADJUST** button.

NOTE: The **Gauge Mode** on the older COSMIQ model does not feature resettable average depth and stage time.



5.3.3 After your dive

Upon surfacing from a dive, or when you are shallower than 2 m (6 ft), your COSMIQ+ will remain in **Bottom Timer Mode** for 5 minutes. If you surface for fewer than 5 minutes and then descend again, your COSMIQ+ will consider this a continuation of the previous dive and the calculations will continue from where they left off.

After 5 minutes, your COSMIQ+ will begin to count the Surface Interval Time. It will be displayed on the **Watch Mode** screen and counted upwards in hours and minutes. Any additional descent will be considered a new dive.

The dive data recorded during each dive is accessible through **Log Mode**.

24-hour Scuba Mode lock

After completing a dive in **Bottom Timer Mode**, **Scuba Mode** will be locked for the next 24 hours.

Scuba Mode and the **Dive Plan** function will not be functional during this period and will display the letters **SUF**. **Scuba Mode** will automatically switch to **Bottom Timer Mode** when detecting pressure.

5.4 Diving in Freedive Mode

Freedive Mode is designed specifically for freediving (apnea). During a dive, your COSMIQ+ measures the current depth, dive time and water temperature. You can set 6 depth alarms and one time alarm (only 3 depth alarms are available for Pre-COSMIQ+ Gen 5 models).

NOTE: Freediving after scuba diving severely increases your risk of decompression illness. While **Freedive Mode** will be fully functional, your COSMIQ+ will remind you of the danger by displaying **NO FrEE** when you navigate to **Freedive Mode** after a dive in **Scuba Mode**.

5.4.1 Setting time and depth alarms

Customizable depth and time alarms can be set for **Freedive Mode**. These can be set directly on the COSMIQ+ or by using the Deepblu mobile app.

To set depth and time alarms on your COSMIQ+, navigate to **Freedive Mode** using the **MODE** button. Press the **ADJUST** button to access the alarm settings. Press **ADJUST** repeatedly to set the first depth alarm at between 10 m (30 ft) and 80 m (240 ft). Press **MODE** to set the second alarm and repeat until all three depth alarms are set.

Next, press **ADJUST** repeatedly to set the desired time between 30 seconds and 10 minutes. Finally, press the **MODE** button to save your changes and return to **Freedive Mode**.

TIP: Press and hold the **ADJUST** button to cycle through depth and time values rapidly.

5.4.2 Entering the water

Just like diving in **Scuba Mode**, there are two ways to dive in **Freedive Mode**: water activation or manual activation.

If your COSMIQ+ is set to use **Freedive Mode** as the default dive mode, just enter the water when in Standby or **Watch Mode** and your COSMIQ+ will activate **Freedive Mode** within seconds of detecting 1.5 m (4.5 ft) of water pressure. You can tell if the current mode is the default mode when the letters **dF** show. This setting can be adjusted in the Deepblu app.

If it is not your default dive mode, simply navigate to **Freedive Mode**. Your COSMIQ+ will stay in **Freedive Mode** for 30 minutes. After 10 minutes, it will dim the screen but remain in **Freedive Mode** for another 20 minutes, ready to activate upon detection of pressure. After 30 minutes, your COSMIQ+ will revert to **Watch Mode**.

5.4.3 During your dive

Once pressure is detected, COSMIQ+ will lock into **Freedive Mode**. The **MODE** and **ADJUST** buttons will be disabled for the duration of the dive. No settings can be changed and no other modes can be accessed during the dive.

When you reach the depth(s) set on your depth alarm(s), the alarm will beep three times. When you reach the dive time set on your time alarm, the alarm will sound for 6 cycles of 3 beeps per cycle.

A glance at your COSMIQ+ will reveal the following information.



5.4.4 After your dive

When surfacing or upon reaching 0 m (0 ft) in Freedive, your COSMIQ will immediately consider the dive over. For other dives this occurs at 1.2m (4 ft). There is no grace period. Any new immersions will be counted as new dives.

The dive data recorded during each dive is accessible through **Log Mode**.

Surface Interval

Your COSMIQ+ will display the time elapsed since the last dive in the middle of the screen, as well as the dive time and maximum depth of the last dive at the bottom of the screen.

In addition, your COSMIQ+ will suggest a minimum safe Surface Interval Time, based on the profile of your last dive, underneath the Surface Interval indicator (**S.I.**). The Surface Interval Time is calculated according to the following formula (with a minimum of 3 minutes):

$$\text{Surface Interval Time} = \text{Max. Pressure (bar)} \times \text{Dive Time (min)}$$


An alarm will sound halfway through the surface interval, as well as at the end of the surface interval.

6. Checking your dive logs

Dive data from previous dives is accessible through **Log Mode**. You can only access **Log Mode** at the surface.

To access previous dive data, navigate to **Log Mode** using the **MODE** button. Press the **ADJUST** button to cycle through your dive logs. Dives are logged in chronological order, with the first log being your most recent dive.

Your COSMIQ+ Gen 5 can store up to 200 logs. Once 200 dives are logged, newer logs will overwrite the oldest. Synchronize your logs with the Deepblu app to safely store them in the Deepblu cloud. (* Pre-COSMIQ+ Gen 5 models stores up to 25 dive logs).

Once the dive log limits are reached on your COSMIQ and you haven't synchronized your previous logs to the Deepblu app, the letters **MAX** will appear on the bottom of the screen and the **Sync Mode** icon  will flash in **Watch Mode**. Perform a synchronization to avoid losing your logs.

NOTE: Dive logs cannot be deleted from your COSMIQ.

7. COSMIQ+ maintenance

7.1 Battery and charging

A fully-charged COSMIQ+ battery will allow between 7 and 12 hours of dive time, depending on your backlight and power-saving settings. However, given the various factors that affect battery usage, it is best to exercise caution and charge your COSMIQ+ as often as possible.

NOTE: The remaining operation time depends on the overall battery health. As with any Li-ion battery, the battery of your COSMIQ+ will gradually lose its capacity after 500 charge cycles and operation time may diminish accordingly.

To charge your COSMIQ+, connect the supplied magnetic USB cable so that the gold-plated contact points snap into place on the bottom of your COSMIQ+. Plug the other end into any standard USB (Type-A) port and check to ensure that battery indicator is filling. Your COSMIQ+ will continue charging even after the screen goes blank.

7.2 Taking care of your COSMIQ+

After every dive, wash your COSMIQ+ thoroughly with fresh water, especially after diving in seawater. If the device is covered with ocean grime, soak your COSMIQ+ overnight in fresh water. If you find salt deposits on your COSMIQ+, consider using warm water. Do not use any cleaning agents or solvents. As with any precision instruments, do not drop your COSMIQ+ or subject it to impact by heavy objects. Do not leave it directly exposed to sunlight for extended periods of time.

To protect the display from scratching when inadvertently scraping your COSMIQ+ on equipment, sand or other rough surfaces in and above the water, we recommend to always keep a screen protector on your COSMIQ+ and replace it when it scratches to a point where readability is impacted. Your COSMIQ+ ships with two screen protectors. When you run out, you can order more from the Deepblu Shop or cut any screen protector to the right size. However, Deepblu does recommend using the thicker type as they offer better protection.

7.3 Safe disposal

Electrical and electronic devices must not be disposed with consumer waste as they are considered hazardous to the environment. Their components must be recycled or disposed separately from regular waste to prevent contaminative and hazardous substances from polluting our environment.

Dispose of your COSMIQ+ Dive Computer as electronic waste. Do not throw it in the garbage with regular trash. Please locate the nearest recycling facility that accepts electronic waste or send the device back to us for disposal. At Deepblu, we prize efforts to protect the environment and will do what is necessary to minimize any impact.

8. Technical specifications

Measurement Units	Metric (meters/°C) or Imperial (feet/°F)
Water Resistance	100 m (330 ft)
Gases	Standard Air and Nitrox, with the oxygen level adjustable between 21%–40%
Partial Oxygen Pressure (PPO ₂)	Adjustable between 1.2 bar and 1.6 bar
Algorithm	Deepblu Decompression Algorithm based on the Bühlmann ZHL-16C model
Safety Factors	Conservative, Normal, Progressive
Altitude	Sea level to 5000 m (16,400 ft)
Battery Life	7 to 12 hours of dive time per charge, depending on your brightness and power-saving settings.
Battery Type	Lithium-ion (rechargeable)
Battery Charger	Standard USB (type-A)
Log Storage	Up to 200 unsynchronized logs (*Pre-COSMIQ+ Gen 5 models stores up to 25 dive logs)
Data Transfer	Blue-tooth 4.0
Dive Log Software	Deepblu Mobile App (iOS/Android)
Firmware Upgrade	Free OTA firmware upgrades (via Blue-tooth)
Housing Material	Fiberglass-reinforced polycarbonate
Lens Material	Polycarbonate with 8h hardness coating
Screen Technology	Enhanced Black Twisted Nematic (EBTN) Negative Image LCD Display

Strap Material	<ul style="list-style-type: none">• 24-mm Ballistic Nylon NATO watch strap• Bungee cord
Dimensions	70.6 mm (2.78") x 48.6 mm (1.91") x 20.9 mm (0.82")
Weight	Approximately 81 g (2.86 oz)
Temperature Display Range	-10°C to +50°C (-14°F to +122°F)
Operating Temperature Range	+5°C to +40°C (+41°F to +104°F)

9. Limited warranty

Your COSMIQ+ Dive Computer comes with a two-year global warranty covering all manufacturing defects, and faults in design and workmanship. Deepblu will, during the warranty period, replace any damaged or defective COSMIQ+ Dive Computer with a new or refurbished unit, subject to the terms and conditions of this Limited Warranty.

The warranty period begins on the day when your COSMIQ+ is first activated by syncing with the Deepblu app. Make sure you are logged in to your personal Deepblu account when syncing to link your COSMIQ+ to your account.

If you experience a fault with your COSMIQ+ within the warranty period, please submit a warranty claim through the Deepblu website to apply for a replacement. Deepblu retains sole discretion to determine, upon evaluation of the product, if your claim is legitimate.

The warranty DOES NOT cover commercial or rental use, nor does it extend to units purchased from anyone other than authorized Deepblu Sales Ambassadors, COSMIQ Resellers, or the Deepblu online Shop.

The warranty specifically EXCLUDES battery depletion or other conditions resulting from normal wear and tear, improper use or handling, negligence, alteration, accident or unauthorized repair.

10. Glossary

Ascent rate	The speed (measured in meters/feet per minute) at which a diver ascends towards the surface.
Ceiling depth	The shallowest depth to which a diver can ascend to complete a mandatory decompression stop.
Central nervous system (CNS) oxygen toxicity	A measurement of the level of oxygen exposure in the body's central nervous system. The CNS oxygen toxicity level is expressed as a percentage. A CNS level of 100% is considered extremely dangerous.
Decompression illness (DCI)	Illness that results from a reduction in the ambient pressure surrounding one's body and the formation of nitrogen bubbles in the blood. DCI encompasses two diseases, decompression sickness (DCS) and arterial gas embolism (AGE).
Dive series	A number of dives completed within a day or over a number of days.
Dive time	The amount of time elapsed between the beginning and the end of a dive.
Maximum operating depth (MOD)	The depth limit which the PPO ₂ level exceeds the maximum allowable level, based on the limit set (1.2 bar to 1.6 bar). Diving below the MOD may expose the diver to unsafe PPO ₂ levels.
Nitrox	Also called enriched air nitrox. A mixture of nitrogen and oxygen used as a breathing gas by divers which contains a higher proportion of oxygen than is normally contained in Standard Air (above 21%).
No-decompression limit (NDL)	The maximum amount of time a diver may remain at a certain depth before requiring a decompression stop.
No-dive time	Minimum amount of time a diver should wait before beginning another dive.
No-fly time	Minimum amount of time the diver should wait before embarking on a flight.
Oxygen level	The percentage of oxygen contained in a breathing mix.

<p>Partial pressure of oxygen (PPO₂)</p>	<p>The total pressure exerted by oxygen in a breathing mix. It is a measurement of the concentration of oxygen in a gas mixture. PPO₂ levels are determined by the percentage of oxygen in a gas mixture and the depth at which a diver breathes the gas. A PPO₂ level above 1.6 bar is considered extremely dangerous and may be toxic.</p>
<p>Residual nitrogen</p>	<p>The amount of excess nitrogen remaining in a diver's body after one or more dives.</p>
<p>Safety Factor</p>	<p>The level of conservativeness of the decompression algorithm. This allows the user to select a standard decompression algorithm, a conservative algorithm or a progressive algorithm.</p>
<p>Stop countdown time</p>	<p>The amount of time required to complete a safety stop or a mandatory decompression stop.</p>
<p>Surface interval</p>	<p>The amount of time that elapses between surfacing from a dive and beginning a new dive.</p>



DIVE ON.
deepblu.com

© Deepblu, Inc. All rights reserved.